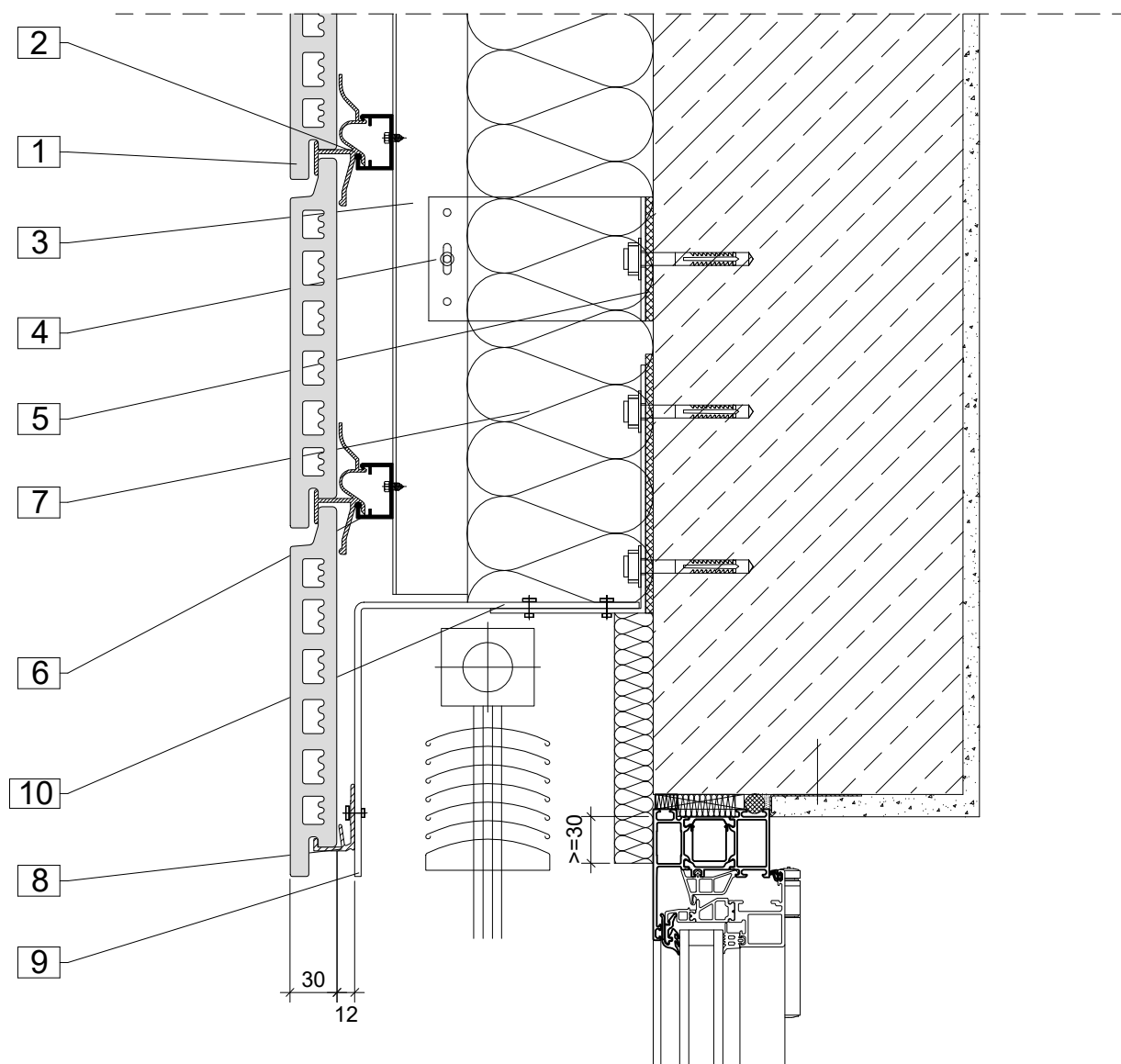


Lintel section with anti-glare shield, option 2

02 / 2020



1. Argeton tile plate
2. Middle clamp
3. Aluminium profile, vertical
4. Aluminium cleat
5. Thermal separation

6. Aluminium carrier rail, horizontal
7. Insulation
8. Bottom clamp
9. Sheet, canted
10. Fastening angle

Notes

The details shown are simplified technical suggestions. The planning and realisation of the facade design are carried out building-specifically and in particular cases are to be adapted to the country building codes and guidelines.